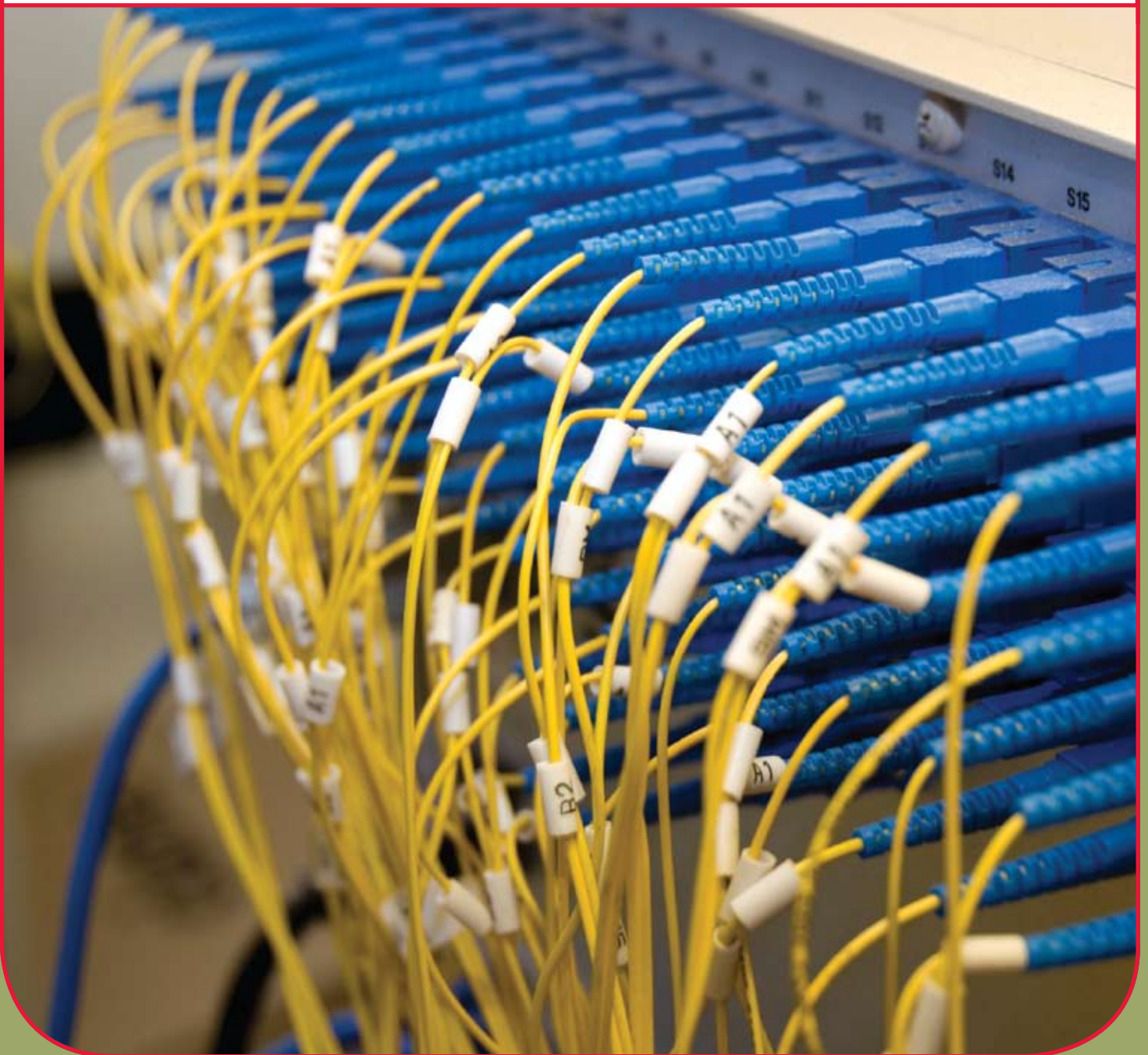


## FIBER OPTIC CONNECTIVITY



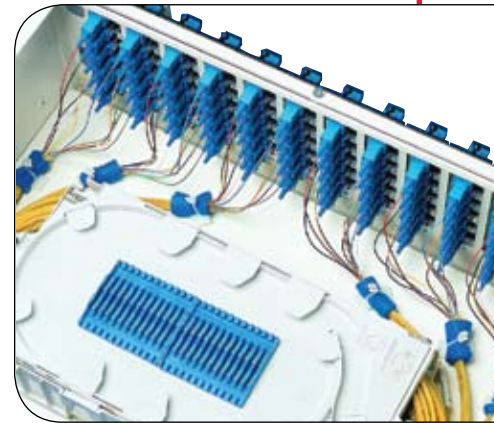
## FIBER OPTIC CONNECTIVITY

### CONTENTS:

- FC 2** Wall Mount Enclosures
- FC 5** Rack Mount Enclosures
- FC 11** Pre-terminated Enclosures
- FC 12** Fiber Accessories – Splice Trays, Connectors, etc.
- FC 14** Zone Distribution
- FC 15** Adapter Plates and Cassette Modules
- FC 19** Jumpers and Cable Assemblies
- FC 21** Fibreguard Closures

As an alternative to traditional copper structured wiring solutions, Optical Cable Corporation designed the FiberOpticx™ product line to offer customers a complete product set to meet the demands of one of the fastest growing network markets today. The FiberOpticx™ product line provides a wide range of fiber distribution solutions from the telecommunication closet to the building entrance to the main equipment room. Within this product set, customers have discovered a cost effective solution offering quality, performance, and flexibility.

As fiber optic cabling needs have increased due to throughput demands, Optical Cable Corporation has continuously developed fiber solutions that are designed to last a lifetime. All fiber connectivity components offer quality manufacturing coupled with Optical Cable Corporation's trademark enthusiasm towards engineering perfection. Add in the flexibility of customized solutions and Optical Cable Corporation's FiberOpticx™ interconnect products are a guaranteed solution.



## Wall Mount Enclosures

Optical Cable Corporation's FiberOpticx™ Wall Mount Cabinets (WTC) provide a solid foundation for any fiber optic application with features like integrated fiber management and easy cable distribution. Each cabinet may be ordered empty or loaded to meet exact specifications. Every WTC

cabinet easily accommodates all cross-connect functions including splicing, termination and interconnects for outside plant backbone and building cables. The WTC series enclosures are scalable, modular and constructed for durability and with Optical Cable Corporation's variety of adapter plates, cassette modules and splicing features, the application options are endless.



WTC12/24x



WTC72x



WTC48x

- Constructed of 16 gauge steel with durable powder coat finish
- Accommodates Optical Cable Corporation snap-in adapter plates and cassette modules
- Removable hinged door provides easy front access and lockable hasp
- Two-tier fiber storage hoops designed to maintain orderly fiber management
- Top and bottom accesses have cable tie-downs/strain relief and full grommets
- Lockable inner door is removable and can be used as a work surface by inserting the tabs into slots provided at the bottom frame of the cabinet
- Port identification sheets are included
- All WTC Series enclosures meet NEMA 12 rated requirements
- Mounting hardware included
- Available in Almond or Black



WTC144x

### Wall Mount Cabinets (Empty)

Catalog Number	Port Capacity	Adapter Plates	Splice Capacity	Splice Trays/Kits	Box Dimensions
WMC12A – (Available in Almond only)	12	2	-	-	11 x 7 x 3
WTC12/24x – (2 blank plates included for 12 port applications)	24	4	24	-	13 x 12 x 3.5
WTC48x	48	8	48	W48S	13 x 5 x 17 x 5.5
WTC72x	72	12	72	W72S	17 x 12 x 11
WSV72x – (Splice cabinet)	-	-	72	W72S	17 x 8.14 x 4
WTC144x	144	24	144	W144S	23 x 17 x 11
WSV288x – (Splice cabinet)	-	-	288	W288S	23 x 17 x 11

\*"x" denotes cabinet color; Replace with A for Almond or B for Black

\*\* Port capacity based on standard 6-pack adapter plates

## WALL MOUNT ENCLOSURES



### FIBER OPTIC CONNECTIVITY | FC 3

Optical Cable Corporation's OC Series Wall Mount Enclosures offer the same modular features of the WTC series with the added outdoor durability for outside plant functionality. The OC series, like all Optical Cable Corporation Wall Mount cabinets can be ordered empty or can be easily customized to fit any exact specification. For NEMA 4 requirements, the OCO48 cabinets offer ideal protection from the outdoor elements. For smaller OSP and inside premise applications the new OCO6N and OCO12N are a perfect fit with the additional benefit of being NEMA Type 3 compliant.



OCO48N



OCWS864x

- OCO Enclosures accommodate snap-in adapter plates and cassette modules
- Lockable hasp ideal for any combination padlock
- Fiber storage hoops designed to maintain orderly fiber management included
- Port identification sheets are included
- Mounting hardware included

#### Outside Wall Mount Cabinets (Empty)

Catalog Number	Port Capacity	Adapter Plates	Splice Capacity	Splice Trays/Kits	Box Dimensions
OCO48N	48	8	-	-	14.5 x 16.5 x 6.1
OCO48NS	48	8	48	W48S	14.5 x 16.5 x 6.1
OCWS864X	-	-	144	W144S	24 x 36 x 15
OCO6N	6	1	12	-	10.3 x 7.7 x 3.1
OCO6NS	6	1	6	Splice Block	10.3 x 7.7 x 3.1
OCO12N	12	2	-	-	10.3 x 7.7 x 3.1
OCO12NS	12	2	12	Splice Block	10.3 x 7.7 x 3.1

\* "x" denotes cabinet color; Replace with A for Almond or B for Black



#### OCO6N Accessories:

Catalog Number	Descriptions
10801301	3/4" Conduit Adapter for OCO6N
10801201	1" Conduit Adapter for OCO6N



## Wall Mount Splice Kits



Optical Cable Corporation offers user friendly Wall Mount splice kits for all applications. All Optical Cable Corporation splice kits are injection-molded and have hinged, clear plastic covers for fiber visibility and maximum protection. Tabs along the tray's side allow for easy fiber routing and all Optical Cable Corporation splice kits are available for smaller fiber capacities.

- All kits include transition trays for cable management and radius control
- Tubing for transporting buffered fibers safely
- Accessories for adapting the trays into the cabinets
- Felt strips and cable ties for securing and strain relieving buffered fibers

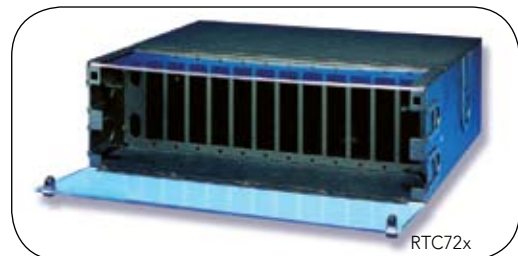
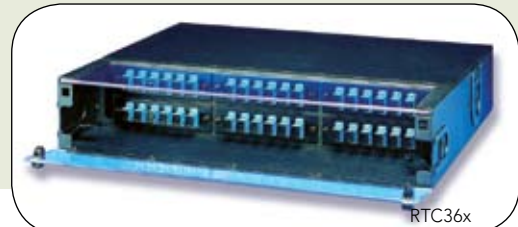
### Wall Mount Splice Kits

Catalog Number	Description
10419901	Splice Tray for 12 Fiber splices
8003469	Splice Tray for 24 Fiber splices
W12RT	Wall Mount Splice Kit for WTC12/24x Cabinet, 12 Fiber Splice Tray
W24PT	Wall Mount Splice Kit for WTC12/24x Cabinet, 24 Fiber Splice Tray
W48S	Wall Mount Splice Kit for 48 Fiber splices
W48RS	Wall Mount Splice Kit, Ribbon Tray, for 48 Fiber splices
W48TS	Wall Mount Splice Kit, Thin Tray, for 48 Fiber splices
W72S	Wall Mount Splice Kit for 72 Fiber splices
W72RS	Wall Mount Splice Kit, Ribbon Tray, for 72 Fiber splices
W72TS	Wall Mount Splice Kit, Thin Tray, for 72 Fiber splices
W144S	Wall Mount Splice Kit for 144 Fiber splices
W144RS	Wall Mount Splice Kit, Ribbon Tray, for 144 Fiber splices
W144TS	Wall Mount Splice Kit, Thin Tray, for 144 Fiber splices
W288S	Wall Mount Splice Kit for 288 Fiber Splices

### Rack Mount Enclosures

Optical Cable Corporation's FiberOpticx™ Rack Mount Cabinets (RTC) apply integrated fiber management into a convenient rack mountable solution. Whether ordering empty or loaded for a customized application, the RTC series enclosures deliver rugged durability with the convenience of one source distribution. Each RTC may be mounted to either a 19" or 23" rack or enclosure and can easily accommodate all cross-connect functions including splicing and termination.

- Constructed of 16-gauge steel with durable powder-coat finish
- Accommodates Optical Cable Corporation snap-in adapter plates and cassette modules
- High Density patch & splice
- Front and rear locking options available
- Two-tier fiber storage hoops designed to maintain orderly fiber management included
- Full rubber grommets offer dust protection for all cable entry and exit points
- Removable rear access panel
- Port identification sheets are included
- Mounting hardware included for 19" or 23" rack mounting
- Available in Almond or Black



**Rack Mount Cabinets (Empty)**

Catalog Number	Rack Units	Port Capacity*	Adapter Plates	Splice Capacity	Splice Trays/Kits
RTC18x	2	18	3	24	R24S
RTC36x	2	36	6	48	R48S
RTC72x	3	72	12	72	R72S
RTC72Sx – (With Storage Bay)	4	72	12	72	R72S
RTC144x	7	144	24	144	R144S
RSC-x	4	-	-	144	RxxTS
RSC-72x (Includes R72TS Kit)	4	-	-	72	RxxTS
RSC-144x (Includes R144TS Kit)	4	-	-	144	RxxTS

\* "x" denotes cabinet color; Replace with A for Almond or B for Black

\*\* Port capacity based on standard 6-pack adapter plates

### Specialized Rack Mount Cabinets



#### FiberOpticx™ Rack Mount Cabinets (Empty)

Catalog Number	Description
RTD18B	Rack Mount Cabinet, Sliding Drawer, Plexiglas™ cover, 18 port, 1 RU, Black

\* 18 port capacity based on standard 6 port coupler plates; higher density may be achieved through 8- and 12-pack coupler plates

Optical Cable Corporation's Specialized Series Rack Mount Cabinets provide the same reliable performance as the RTC series with the added bonus of a specific use design. Each specialized rack mount cabinet offers rugged durability and options for complete customization.

For applications that require easy access to the rear side of installed couplers, the RTD18B fiber termination drawer is a perfect solution. This low profile high density rack mount cabinet simply slides out for obstruction free access for up to 36 ports.

- Removable (Plexiglas™) cover protects contents, and is easily removed to provide access to cable management or splicing area of the cabinet
- Fiber cable managers are used to manage extra fiber while maintaining bend radius requirements
- Allows for up to 36 connections per drawer, with high-density 12-pack coupler plates
- Front side cable support shelf provides room to perform cable management and tie-down.



#### Rack Mount Cabinets (Empty)

Catalog Number	Description
RTS24B	Rack Mount Cabinet, Sliding Tray, Plexiglas™ cover, 24 port, 2 RU, Black

\* 24 port capacity based on standard 6 port coupler plates; higher density may be achieved through 8- and 12-pack coupler plates

(Plexiglas™ is a Registered Trademark of Rohm & Haas)

For larger applications that mandate rear coupler access, Optical Cable Corporation designed the RTS series rack mount cabinets. With 24 to 48 port capabilities, the RTS rack mount cabinet is ideal for easy contractor installations offering the convenience of a sliding tray that operates both forward and backward. Each cabinet is built to be a strong, durable, high-density, patch and splice solution for fiber optic networking.

- Constructed of 16 gauge steel with a black powder coat finish
- High Density patch and splice
- Open top access and removable front door
- Sliding tray moves forwards and backwards
- Rear locking feature for access control of fiber terminations

When higher density applications are needed, Optical Cable Corporation rack mount cabinets offer a compact solution. This rack mountable cabinet offers rugged durability and complete application flexibility and is ideal for small racks and closets. The RTR not only offers high density capabilities, but also left and right rear cable entry and a removable top access panel.

- Constructed of 16 gauge steel with a black powder coat finish
- High density patch and splice in a 1 RU rack space
- Left and right rear cable entry
- Removable top access panel
- Recessed feature for small rack form factor
- Includes (8) Bridge lances and (1) Rear metal quarter-turn bail lock
- Accommodates any Optical Cable Corporation snap-in adapter plate and R12 splicing kit



**Rack Mount Cabinets (Empty)**

Catalog Number	Description
RTR12B	Rack Mount Cabinet, Recessed, High Density, 12 Port, 1 RU, Black

\* 12 port capacity based on standard 6 port coupler plates; higher density may be achieved through 8- and 12-pack coupler plates



RTC1UB-48DLC

Optical Cable Corporation's RTC series fiber optic cabinets offer a quick solution for easy plug and play connectivity. Whether ordering empty for field installations or completely pre-terminated for easy plug and play installations, the RTC rack mount cabinets are a versatile and flexible option for fiber optic structured cabling systems.

- Constructed of 16 gauge steel with a black powder coat finish
- High density patch and splice in a 1 RU rack space
- Left and right rear cable entry
- Removable top access panel
- Cable management hoops included
- Accommodates any Optical Cable Corporation snap-in adapter plate or cassette module
- May be ordered pre-terminated for plug and play operability



RTC1UB-24SCSM

**Rack Mount Cabinets**

Catalog Number	Description
RTC1UB	Rack Mount Cabinet, With Cover & Fiber Management, 18 Port, 1 RU, Black, Empty
RTC1UB-24SC	Rack Mount Cabinet, 24 Port, 1 RU, SC, Simplex, SM/MM, Black
RTC1UB-24SCMM	Rack Mount Cabinet, 24 Port, 1 RU, SC, Simplex, MM, Black
RTC1UB-24SCSM	Rack Mount Cabinet, 24 Port, 1 RU, SC, Simplex, SM, Black
RTC1UB-48DLC	Rack Mount Cabinet, 48 Port, 1 RU, LC, Duplex, SM/MM, Black
RTC1UB-48DLCMM	Rack Mount Cabinet, 48 Port, 1 RU, LC, Duplex, MM, Black
RTC1UB-48DLCSM	Rack Mount Cabinet, 48 Port, 1 RU, LC, Duplex, SM, Black



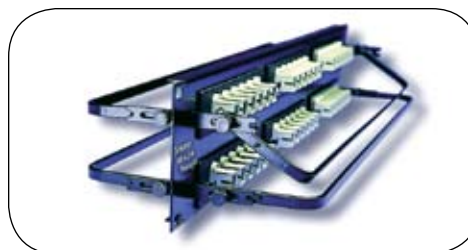
## RACK MOUNT ENCLOSURES



### FC 8 | FIBER OPTIC CONNECTIVITY

For a multi-media application, Optical Cable Corporation offers a universal rack mount patch panel for termination and cable management only. The BHP panel system is well suited for multi-application cabling environments and with Optical Cable Corporation's snap-in adapter plates and cassette modules, these panels can be installed in a variety of combinations.

- Constructed of 16 gauge steel with a black powder coat finish
- Strain relief bar offers enhanced cable management
- Tie wraps included for controlled cable
- Accommodates any Optical Cable Corporation snap-in adapter plate or cassette module



#### Universal Fiber Patch Panels (Empty)

Catalog Number	Rack Units	Port Capacity*	Adapter Plates	Splice Capacity
BHP3 - Panel	1	18	3	-
BHP6 - Panel	2	36	6	-
BHP72 - Plate	3	72	12	-
BHP144 - Plate	6	144	24	-
* Port capacity based on standard 6-pack adapter plates				

### Rack Mount Locking Kits

All standard RTC series cabinets are available with a locking option for both front and rear access security. Order the cabinet with a factory installed kit or specify a retro-kit to upgrade any cabinet in service today.



#### Retro-Fit Rack Mount Cabinet Locking Kits

Catalog Number	Description
RTCLK18/36x	Rack Mount Cabinet, 18 or 36 port, With Retro-Fit Lock Kit
RTCLK72x	Rack Mount Cabinet, 72 port, With Retro-Fit Lock Kit
RTCLK72Sx	Rack Mount Cabinet, 72 port, With Storage, With Retro-Fit Lock Kit
RTCLK144x	Rack Mount Cabinet, 144 port, With Retro-Fit Lock Kit
* "x" denotes cabinet color; Replace with A for Almond or B for Black	
** Port capacity based on standard 6-pack adapter plates	

## Rack Mount Cabinets with Factory Installed Locking Kits

Catalog Number	Description
RTCL18x	Rack Mount Cabinet, 18 port, With Factory Installed Lock Kit
RTCL36x	Rack Mount Cabinet, 36 port, With Factory Installed Lock Kit
RTCL72x	Rack Mount Cabinet, 72 port, With Factory Installed Lock Kit
RTCL72Sx	Rack Mount Cabinet, 72 port, With Storage, With Factory Installed Lock Kit
RTCL144x	Rack Mount Cabinet, 144 port, With Factory Installed Lock Kit
* "x" denotes cabinet color; Replace with A for Almond or B for Black	
** Port capacity based on standard 6-pack adapter plates	

## Retro-Fit Rack Mount Cabinet Locking Kits with Metal Doors

Catalog Number	Description
RTCLKM18/36x	Rack Mount Cabinet, 18 or 36 port, With Retro-Fit Lock Kit, Metal Door
RTCLKM72x	Rack Mount Cabinet, 72 port, With Retro-Fit Lock Kit, Metal Door
RTCLKM72Sx	Rack Mount Cabinet, 72 port with storage, With Retro-Fit Lock Kit, Metal Door
RTCLKM144x	Rack Mount Cabinet, 144 port with storage, With Retro-Fit Lock Kit, Metal Door
* "x" denotes cabinet color; Replace with A for Almond or B for Black	
** Port capacity based on standard 6-pack adapter plates	

## Rack Mount Recess Brackets

Optical Cable Corporation's recess brackets allow RTC series cabinets to easily mount into any enclosure with a front door. By using Optical Cable Corporation's recess brackets, the cabinet will be flush with the rack's mounting rails, allowing sufficient room between the cabinet and the door.



## Recess Brackets for Rack Mount Cabinets (19" Mounting)

Catalog Number	Description
BKTR1836x	Recess Bracket for 18 or 36 port cabinet, 19" Mounting
BKTR72x	Recess Bracket for 72 port cabinet, 19" Mounting
BKTR144x	Recess Bracket for 144 port cabinet, 19" Mounting
* "x" denotes color; Replace with A for Almond or B for Black	

## Recess Brackets for Rack Mount Cabinets (23" Mounting)

Catalog Number	Description
BKTR23/1836x	Recess Bracket for 18 or 36 port cabinet, 23" Mounting
BKTR23/72x	Recess Bracket for 72 port cabinet, 23" Mounting
BKTR23/144x	Recess Bracket for 144 port cabinet, 23" Mounting
* "x" denotes color; Replace with A for Almond or B for Black	

## Rack Mount Splice Kits



Optical Cable Corporation offers user friendly Rack Mount splice kits for all applications. All Optical Cable Corporation splice kits are injection-molded and have hinged clear plastic covers for fiber visibility and maximum protection. Tabs along the tray's side allow for easy fiber routing and all Optical Cable Corporation splice kits are available for smaller fiber capacities.

- All kits include transition trays for cable management and radius control
- Tubing for transporting buffered fibers safely
- Accessories for adapting the trays into the cabinets
- Felt strips and cable ties for securing and strain relieving buffered fibers

### Rack Mount Splice Kits

Catalog Number	Description
R12S	Rack Mount Splice Kit for 12 Fiber splices for use with RTR12B
R24S1UB	Rack Mount Splice Kit for 24 Fiber splices, for use with RTC1UB
R24S	Rack Mount Splice Kit for 24 Fiber splices
R24TS	Rack Mount Splice Kit, Thin Tray, for 24 Fiber splices
R24RS	Rack Mount Splice Kit, Ribbon Tray, for 24 Fiber splices
R36TS	Rack Mount Splice Kit, Thin Tray, for 36 Fiber splices
R48S	Rack Mount Splice Kit, for 48 Fiber splices
R48TS	Rack Mount Splice Kit, Thin Tray, for 48 Fiber splices
R48RS	Rack Mount Splice Kit, Ribbon Tray, for 48 Fiber splices
R72S	Rack Mount Splice Kit for 72 Fiber splices
R72TS	Rack Mount Splice Kit, Thin Tray, for 72 Fiber splices
R72RS	Rack Mount Splice Kit, Ribbon Tray, for 72 Fiber splices
R96S	Rack Mount Splice Kit for 96 Fiber splices
R96TS	Rack Mount Splice Kit, Thin Tray, for 96 Fiber splices
R96RS	Rack Mount Splice Kit, Ribbon Tray, for 96 Fiber splices
R144S	Rack Mount Splice Kit for 144 Fiber splices
R144TS	Rack Mount Splice Kit, Thin Tray, for 144 Fiber splices
R144RS	Rack Mount Splice Kit, Ribbon Tray, for 144 Fiber splices
R288RS	Rack Mount Splice Kit, Ribbon Tray, for 288 Fiber splices

## Pre-terminated Enclosures

Optical Cable Corporation has always strived to provide an easy solution for any structured cabling problem. To alleviate the need for complicated fiber optic installations, Optical Cable Corporation offers a complete line of pre-terminated and completely loaded FiberOpticx™ enclosures. Every Optical Cable Corporation Wall Mount or Rack Mount cabinet can be factory terminated for easy field installs and comes with testing information for 100% guaranteed performance.

- Any pre-terminated or loaded enclosure can be ordered using any Optical Cable Corporation fiber optic enclosure
- Available in a variety of termination options and application combinations (Single-mode or multimode)
- Testing information included with every pre-terminated cabinet



Use the ordering guide below to custom configure any Optical Cable Corporation cabinet:

**Pre-terminated Cabinets**

Cabinet Type	Ports	Color	Loaded Parts	Adapter Type	Pig Tails	Multi-Mode only	Splice Kit
WTC Wall Mount Cabinet	12	A Almond	6	ST (MM/SM)	P	6	S
	18		12	MMST		62.5 µm	
OCO Outdoor Cabinet	24	B Black	18	SMST		5	
	36		24	SC (MM/SM)		50 µm	
RTC Rack Mount Cabinet	48		36	MMSC		5G	
	72		48	SMSC		50 µm LO	
RTD Rack Mount Drawer	144		64	SCAPC			
			72	SMFC			
RTS Rack Mount Slide			96	MMFC			
			120	FCAPC			
RTR Rack Mount Recessed			144	MMRJ			
			192	SMRJ			
			288	LC (MM/SM)			
				MMLC			
				SMLC			

\*OCO available in 6, 12, and 48 ports; RTD available in 18 ports; RTS available in 18 and 24 ports; RTR available in 12 ports

Example: WTC144A144SMSCPS =  
Wall Mount Cabinet 144 Port, Almond,  
With 24 6-pack SMSC adapter plates,  
With Splice Kit and Pigtails



## Fiber Optic Accessories

### Xpress Fiber Connectors



- Available for single-mode and multi-mode fibers and come in SC, ST, and LC termination styles
- Easy to assemble
- No expensive tools or epoxy required
- No polishing required
- Fiber can be re-installed
- Meets TIA/EIA 568 performance requirements

Optical Cable Corporation's Xpress Fiber Connectors are the new generation in field installable fiber terminations. These connectors eliminate the need for messy epoxies and expensive tools by offering a pre-polished solution that can be installed in minutes. Xpress Connectors have a pre-stubbed factory polished ferrule that joins to the fiber using a precise mechanical alignment and a special low loss index matching gel. Each connector comes with a specially designed clip that holds the clamping devices open for the fiber to be inserted. Once the fiber is inserted, squeeze the clip to release the blades, remove clip and discard.

#### Specifications

Parameter	Value
Insertion Loss:	Average: 0.2 dB, Maximum: 0.5 dB
Single-mode	Average: 0.1 dB, Maximum: 0.5 dB
50/125	Average: 0.1 dB, Maximum: 0.5 dB
62.5/125	
Return Loss (Single-mode)	Average: 56.4 dB, Maximum: 45 dB
Operating Temperature	-40°C to +75°C

#### Xpress Fiber Connectors

Catalog Number	Description
FXC-SCx-6	Xpress SC Connector, 6-pack
FXC-SCx-12	Xpress SC Connector, 12 pack
FXC-SCx-100	Xpress SC Connector, 100 contractor pack
FXC-STx-6	Xpress ST Connector, 6-pack
FXC-STx-12	Xpress ST Connector, 12 pack
FXC-STx-100	Xpress ST Connector, 100 contractor pack
FXC-LCx-6	Xpress LC Connector, 6-pack
FXC-LCx-12	Xpress LC Connector, 12 pack
FXC-LCx-100	Xpress LC Connector, 100 contractor pack
Replace "x" with 5 for 50 micron, 5G for 50 micron 10 Gig, 6 for 62.5 micron or 8 for single-mode	

Splice Trays

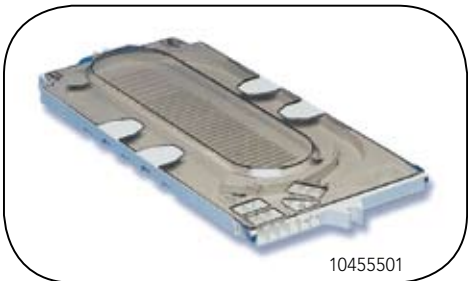
For the ultimate in splicing capabilities, Optical Cable Corporation offers fiber Splice Trays that are available in a variety of options and are injection molded for a cost effective solution.

Splice Trays

Catalog Number	Description
10180401	Optical Cable Corporation Standard Tray for 24 Fiber splices (up to 36 splices)
10455501	Optical Cable Corporation Splice Tray for (12) 12 Ribbon Fiber capacity
10630501	Optical Cable Corporation Thin Tray for up to 36 Fiber splices
10419901	Optical Cable Corporation Splice Tray for 12 Fiber splices
8003469	Optical Cable Corporation Splice Tray for 24 Fiber splices
80805110	Optical Cable Corporation Splice Tray with Molded slots for up to 36 Fiber splices



10180401



10455501



10419901

Fiber Strippers and Cleavers

To create a full solution, Optical Cable Corporation offers Fiber Strippers and Cleavers to assist in field fiber polishes and terminations. These tools, necessary for any fiber optic project installation, are backed by Optical Cable Corporation's 15 year product warranty and are a value added component to the Optical Cable Corporation FiberOpticx™ product line.

Fiber Strippers and Cleavers

Catalog Number	Description
FOCT	FiberOpticx™ Precision Fiber Cleaver
FOCT2	FiberOpticx™ Economy Fiber Cleaver (AKA Beaver)
FOST	FiberOpticx™ Fiber Stripper



FOCT2



FOST

## Zone Distribution

Optical Cable Corporation's Fiber Zone Distribution solution for cable tray mounting provides a convenient access point for network zone cross connect points. Each Fiber Distribution module can be ordered blank or custom configured with either Optical Cable Corporation Fiber MT Cassette Modules or Optical Cable Corporation Fiber Adapter Plates. These modules allow customers to take the distribution point out of the equipment room to where it's needed, while giving installers less installation time and a reduction in cabling costs.

- Fully customizable with Optical Cable Corporation MT Cassette Modules or Fiber Adapter Plates
- Expandable design will fit tray widths from 12" to 18"
- Easy installations and additions without disturbing previously installed cable
- Reduces the number of cables and congestion in a cable tray
- All components made in the U.S.



### Zone "Spider" Distribution Solution (for cable tray)

Catalog Number	Description
ZDMB2-WB1218	Fiber Zone Distribution Module – Bracket only*

\* Order any Optical Cable Corporation MT Cassette Module or Fiber Adapter Plate to custom configure your Zone Module

When hours of tedious installation time are not available, consider Optical Cable Corporation's pre-assembled fiber optic connectivity solution that effectively eliminates the labor associated with standard fiber field terminations.

Optical Cable Corporation's plug and play zone distribution box offers a variety of fiber optic connectivity options with the ease of quick installations. Perfect for the office environment or if rack space is limited, these fiber zone boxes mount anywhere and are 100% factory tested to ensure superior performance.



- Available in a variety of pre-assembled plug and play solutions, including MT to ST, MT to SC, MT to MT-RJ, and MT to LC

- Multi-mode adaptation only
- Mounts anywhere
- 100% performance tested using certified ISO procedures

### Plug and Play Zone Distribution Boxes

Catalog Number	Description
PPEAMMDLC-005	Fiber Zone Box, Portable Patch Enclosure, Dual LC x 6 to MT, 50 µm
PPEAMMDLC-006	Fiber Zone Box, Portable Patch Enclosure, Dual LC x 6 to MT, 62.5 µm
PPEAMMDSC-005	Fiber Zone Box, Portable Patch Enclosure, Dual SC x 6 to MT, 50 µm
PPEAMMDSC-006	Fiber Zone Box, Portable Patch Enclosure, Dual SC x 6 to MT, 62.5 µm
PPEAMMLQC-005	Fiber Zone Box, Portable Patch Enclosure, Quad LC x 3 to MT, 50 µm
PPEAMMLQC-006	Fiber Zone Box, Portable Patch Enclosure, Quad LC x 3 to MT, 62.5 µm

## Fiber Optic Connectors

For those who prefer to assemble connectors at the component level, Optical Cable Corporation offers a complete line of connector kits for field terminations. Each connector kit offers exceptional optical performance in an easy to install form factor.

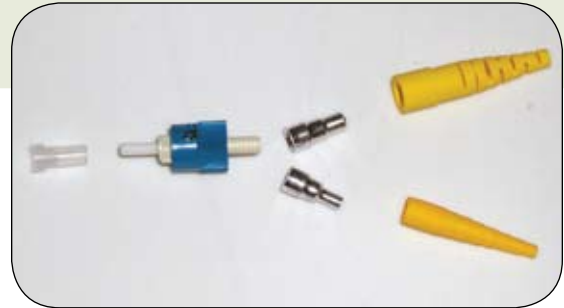
- Available in FC, LC, SC, and ST connector styles.
- Single-mode and Multimode
- Low insertion loss and back reflection

### Fiber Optic Connectors

Catalog Number	Description
FC-ST-SM	ST Connector Kit, Single-Mode, Blue Housing
FC-ST-MM	ST Connector Kit, Multimode, Beige Housing
FC-SC-SM	SC Connector Kit, Single-Mode, Blue Housing
FC-SC-MM	SC Connector Kit, Multimode, Beige Housing
FC-LC-SM	LC Connector Kit, Single-Mode, Blue Housing
FC-LC-MM	LC Connector Kit, Multimode, Beige Housing
FC-FC-SM	FC Connector Kit, Single-Mode, Blue Housing
FC-FC-MM	FC Connector Kit, Multimode, Beige Housing

### Specifications

Parameter	Value
Insertion Loss (average)	0.2 dB
Reflectance	< -30 dB for PC < -40 dB for Super PC < -55 dB for Ultra PC < -65 dB for Angled PC
Durability	≤ 0.2 dB change, 500 rematings, FOTP -21
Tensile Strength	≤ 0.2 dB change, 15 lb, FOTP -6
Temperature Cycling	-40° to +75°C, 21 cycles, < 0.3 dB change
Material	Ferrule: Preradiused zirconia Housing: Thermoplastic





## Fiber Optic Cleaners

To complement our connectors, Optical Cable Corporation offers dry cloth cleaners specifically designed to clean single fiber connectors. Each cleaner is easy to use and very effective at eliminating contaminants that can deter optical performance.

- Cleaning system rotates 180° for a complete sweep
- Easy pushing motion employs connector and commences cleaner
- Disposable with 525+ cleanings per unit



### Fiber Optic Cleaners

Catalog Number	Description
FC-SCK-LC-125	Fiber Optic Cleaner, LC-MU
FC-SCK-SC-250	Fiber Optic Cleaner, SC-FC-ST

### Environmental Properties:

Crush resistance up to 45 lbs

Impact resistance up to 6 feet

Operating Temperature Range -10°C to +60°C

## Anaerobic Field Termination Kit

These small, light-weight kits offered by Optical Cable Corporation are ideal for field terminations. These kits include interchangeable Single-Mode and Multimode light sources, termination tools, and portable fiber meters.



### Fiber Optic Anaerobic Field Termination Kit

Catalog Number	Description
FC-AFT	Fiber Optic Anaerobic Field Termination Kit, Includes SM Fiber Meter, MM Fiber Meter, Light Source Mainframe, SM Light Source Module, MM Light Source Module, 2.5mm to 1.25mm Adapter, LC-ST Test Lead, LC-SC Test Lead, ST-FC Adapter, SC-SC Adapter

## Fiber Optic Adapter Plates

To accompany all Optical Cable Corporation FiberOpticx™ enclosures, Optical Cable Corporation developed snap-in fiber adapter plates that are versatile enough to meet any fiber application and durable enough to withstand field installations. All Optical Cable Corporation fiber adapter plates guarantee performance parameters for the application specified and can be pre-loaded into Optical Cable Corporation fiber cabinets for easy plug and play operability.

- Available in 6-, 8-, and 12-port fiber configurations
- Panel options available include ST, SC, DSC, FC, MTRJ, LC, and others
- High density applications can be reached through Dual and Quad LC applications
- Composite, Metal, or Ceramic sleeve options
- Blank panels are available for use as dust covers
- Plates are available for mounting Bezel style jacks, creating a mixed media environments

### ST Adapters

#### ST Adapter Plates

Catalog Number	Description
616MMST	Fiber Adapter Plate, 6-port, ST, Multi-mode, Composite sleeve
616ST	Fiber Adapter Plate, 6-port, ST, Multi-mode/Single-mode, Metal sleeve
616SMST	Fiber Adapter Plate, 6-port, ST, Single-mode, Ceramic sleeve
616SMDST	Fiber Adapter Plate, 6-port, Dual ST, Single-mode, Ceramic sleeve
616ST/SC	Fiber Adapter Plate, 6-port, ST to SC patch, Multi-mode/Single-mode, Composite sleeve
818MMST	Fiber Adapter Plate, 8-port, ST, Multi-mode, Composite sleeve
818ST	Fiber Adapter Plate, 8-port, ST, Multi-mode/Single-mode, Metal sleeve
818SMST	Fiber Adapter Plate, 8-port, ST, Single-mode, Ceramic sleeve
6112MMDST	Fiber Adapter Plate, 12-port, Dual ST, Multi-mode, Composite sleeve
6112DST	Fiber Adapter Plate, 12-port, Dual ST, Multi-mode/Single-mode, Metal sleeve
6112SMDST	Fiber Adapter Plate, 12-port, Dual ST, Single-mode, Ceramic sleeve



## FIBER OPTIC ADAPTER PLATES

### FC 18 | FIBER OPTIC CONNECTIVITY

#### SC Adapters

##### SC Adapter Plates

Catalog Number	Description
616MMSC	Fiber Adapter Plate, 6-port, SC, Multi-mode, Composite sleeve
616SC	Fiber Adapter Plate, 6-port, SC, Multi-mode/Single-mode, Metal sleeve
616SMSC	Fiber Adapter Plate, 6-port, SC, Single-mode, Ceramic sleeve
616MMDSC	Fiber Adapter Plate, 6-port, Dual SC, Multi-mode, Composite sleeve
616DSC	Fiber Adapter Plate, 6-port, Dual SC, Multi-mode/Single-mode, Metal sleeve
616SMDSC	Fiber Adapter Plate, 6-port, Dual SC, Single-mode, Ceramic sleeve
616SCAPC	Fiber Adapter Plate, 6-port, SC, Single-mode, Angled, Composite sleeve
818MMSC	Fiber Adapter Plate, 8-port, SC, Multi-mode, Composite sleeve
818SC	Fiber Adapter Plate, 8-port, SC, Multi-mode/Single-mode, Metal sleeve
818SMSC	Fiber Adapter Plate, 8-port, SC, Single-mode, Ceramic sleeve
818SCAPC	Fiber Adapter Plate, 8-port, SC, Single-mode, Angled, Composite sleeve
6112MMDSC	Fiber Adapter Plate, 12-port, Dual SC, Multi-mode, Composite sleeve
6112DSC	Fiber Adapter Plate, 12-port, Dual SC, Multi-mode/Single-mode, Metal sleeve
6112SMDSC	Fiber Adapter Plate, 12-port, Dual SC, Single-mode, Ceramic sleeve
6112SMDSCAPC	Fiber Adapter Plate, 12-port, Dual SC, Single-mode, Angled, Ceramic sleeve

616MMSC



6112MMDSC



818SMSC



#### LC Adapters

##### LC Adapter Plates

Catalog Number	Description
616MMDLC	Fiber Adapter Plate, 6-port, Dual LC, Multi-mode, Composite sleeve
616DLC	Fiber Adapter Plate, 6-port, Dual LC, Multi-mode/Single-mode, Metal sleeve
616SMDLC	Fiber Adapter Plate, 6-port, Dual LC, Single-mode, Ceramic sleeve
818DLC	Fiber Adapter Plate, 8-port, Dual LC, Multi-mode/Single-mode, Composite sleeve
818SMDLC	Fiber Adapter Plate, 8-port, Dual LC, Single-mode, Metal sleeve
6112DLC	Fiber Adapter Plate, 12-port, Dual LC, Multi-mode/Single-mode, Metal sleeve
6112MMDLC	Fiber Adapter Plate, 12-port, Dual LC, Multi-mode, Ceramic sleeve
6112SMDLC	Fiber Adapter Plate, 12-port, Dual LC, Single-mode, Ceramic sleeve
6124MMQLC	Fiber Adapter Plate, 24-port, Quad LC, Multi-mode, Metal sleeve
6124SMQLC	Fiber Adapter Plate, 24-port, Quad LC, Single-mode, Ceramic sleeve

616MMDLC



6112SMDLC



6124MMQLC



## 50 Micron 10 Gig Adapters

### 50 Micron 10 Gig Adapter Plates

Catalog Number	Description
616SC50G	Fiber Adapter Plate, 6-port, SC, Multi-mode, 50 Micron, Composite sleeve
616DSC50G	Fiber Adapter Plate, 6-port, Dual SC, Multi-mode, 50 Micron, Composite sleeve
6112DSC50G	Fiber Adapter Plate, 12-port, Dual SC, Multi-mode, 50 Micron, Composite sleeve
616DLC50G	Fiber Adapter Plate, 6-port, Dual LC, Multi-mode, 50 Micron, Composite sleeve
6112DLC50G	Fiber Adapter Plate, 12-port, Dual LC, Multi-mode, 50 Micron, Composite sleeve
6124QLC50G	Fiber Adapter Plate, 24-port, Quad LC, Multi-mode, 50 Micron, Composite sleeve



616SC50G



6112DLC50G

## MT-RJ Adapters

### MT-RJ Adapter Plates

Catalog Number	Description
616MMRJ	Fiber Adapter Plate, 6-port, MT-RJ, Multi-mode, Composite sleeve
616MMDRJ	Fiber Adapter Plate, 6-port, Dual MT-RJ, Multi-mode, Composite sleeve
818MMRJ	Fiber Adapter Plate, 8-port, MT-RJ, Multi-mode, Composite sleeve
6112MMDRJ	Fiber Adapter Plate, 12-port, Dual MT-RJ, Multi-mode, Composite sleeve
6112SMDRJ	Fiber Adapter Plate, 12-port, Dual MT-RJ, Single-mode, Composite sleeve



616MMRJ

## FC Adapters

### FC Adapter Plates

Catalog Number	Description
616FC	Fiber Adapter Plate, 6-port, FC, Multi-mode/Single-mode, Metal sleeve
616SMFC	Fiber Adapter Plate, 6-port, FC, Single-mode, Ceramic sleeve
616FCAPC	Fiber Adapter Plate, 6-port, FC, Single-mode, Angled, Ceramic sleeve
818MMFC	Fiber Adapter Plate, 8-port, FC, Multi-mode, Composite sleeve
818FC	Fiber Adapter Plate, 8-port, FC, Multi-mode/Single-mode, Metal sleeve
818SMFC	Fiber Adapter Plate, 8-port, FC, Single-mode, Ceramic sleeve
818FCAPC	Fiber Adapter Plate, 8-port, FC, Single-mode, Angled, Ceramic sleeve



616FC



818FC

## Specialty Adapters

### Specialty Adapter Plates

Catalog Number	Description
600	Fiber Adapter Plate, 6-port, Blank
616BNC	Fiber Adapter Plate, 6-port, BNC adapters loaded
616F	Fiber Adapter Plate, 6-port, F adapters loaded
616SMA	Fiber Adapter Plate, 6-port, SMA adapters loaded



600



## MT Plug and Play Cassette Modules

Designed for speed and effortless installation, Optical Cable Corporation's fiber optic cassette modules are available with many adapter choices and offer customers a dependable, performance driven solution. The cassettes simply Snap-In to any Optical Cable Corporation FiberOpticx™ rack mount or wall mount cabinet and can be configured to meet any fiber optic protocol. These cassettes provide significant installation savings with no field terminations required. Simply plug and play!

- Available in 6-, 12-, and even 24-port adapters
- Easily field installable with Snap-In push pin design
- Fits into any Optical Cable Corporation FiberOpticx™ rack or wall mount cabinet
- Available in 50, 62.5 or 8.3 micron for either Multi-mode or Single-mode applications

- Both 6- and 12-port modules are available with Duplex ST, SC, MT-RJ, and LC adapters
- 24-port modules are available with new Quad LC adapters
- Cassette modules are factory terminated and 100% tested for guaranteed performance
- Standard configuration has male MT (with pins) installed

### MT Cassette Modules

MTCM			
Fiber Count	Connector	Fiber Type	
6	ST	5 = 50 $\mu$ m	
12	SC	5G = 10 Gig	
24*	RJ	6 = 62.5 $\mu$ m	
	LC	8 = 8.3 $\mu$ m	

\* Note: 24 Port Cassette available in LC only

## MT Cable Assemblies

The Optical Cable Corporation MT to MT cable assembly coupled with Optical Cable Corporation's MT Cassette Modules offer a true plug and play connectivity solution that effectively eliminates standard labor costs associated with fiber field installations. The MT solution ensures guaranteed performance through 100% testing to ISO procedures and provides a low-profile cross connect solution designed for reliability. Included with the MT solution, Optical Cable Corporation's pulling eye simplifies connectivity needs by stream-lining connectors for snag-less installations. This product can be used for pulling connected cable through conduit or other channels, enabling quick connections.



- Available in 50/125  $\mu$ m or 62.5/125  $\mu$ m multi-mode
- Single-mode also available
- Riser or plenum rated cable can be ordered in any length

### MT to MT Cable Assemblies

MT							-		
Fiber Count	Fiber Material	Fiber Style	Connector Ends	Fiber Type	Fiber Capacity	Length in Feet		Pulling Eye Kit	
06	R = Riser	B = Ribbon	F = Female	5 = 50 $\mu$ m	TK = Standard			PK = 1 end	
12	P = Plenum	R = Round	M = Male	6 = 62.5 $\mu$ m	TG = 10 Giga			PK2 = 2 ends	
				8 = SM					

Example: MT12RBM5TK-03PK = MT Riser Cable Assembly, 12 fiber, Ribbon, Male connectors, Multi-mode 50 micron, 3 feet in length with 1 end pulling kit.

Optical Cable Corporation reserves the right to change this specification without prior notification.

## Fiber Optic Jumpers

Get exactly the jumper you need to make the transition from cross-connect point to the electronics. With unmatched insertion loss and exceptional return loss performance, Optical Cable Corporation's comprehensive line of fiber jumpers ensures the right connection every time. Each polish is 100% tested, including interferometer inspection of end-face geometry and every assembly is provided with corresponding test data. Available in simplex or duplex, multimode (50/125 or 62.5/125) or Single-mode and a variety of connector types and lengths, Optical Cable Corporation's jumpers can be ordered to customize any fiber optic protocol.

- ISO certified
- Telcordia GR-326-CORE compliant
- Automated polishing equipment
- Interferometer testing for End-face geometry
- 100% testing on Multi-mode for insertion loss
- 100% testing on Single-mode for insertion and return loss
- Multi-Fiber distribution cables, single or dual ended terminations
- Discrete connectors utilize ceramic ferrules
- Custom jacket colors for security applications
- Any specified length available
- PC polish is standard



FC



LC



SC



ST



MTRJ

### Multi-mode Jumpers

Fiber Count	Fiber Type	Connector Type	Connector Type	Length in Meters	Gigabit
D = Duplex	5 = 50 $\mu$ m	ST	ST	1M	G
S = Simplex	6 = 62.5 $\mu$ m	SC	SC	2M	
		LC	LC	3M	
		RJ = MT-RJ	RJ = MT-RJ	5M	
		FC	FC	10M	
				*Any custom length available	

Example: D6RJ-SC-1M = Duplex 62.5  $\mu$ m, MT-RJ to SC, 1 Meter in length

## FIBER OPTIC JUMPERS

### FC 22 | FIBER OPTIC CONNECTIVITY

#### Single-mode Jumpers

	8		Optional			
Fiber Count	Connector Type	Polish Type	Connector Type	Polish Type	Length in Meters	
D = Duplex	ST	UPC = Ultra	ST	UPC = Ultra	1M	
S = Simplex	SC	XUPC = Extreme	SC	XUPC = Extreme	2M	
	LC	APC = Angled	LC	APC = Angled	3M	
	FC		FC		5M	
	RJ = MT-RJ		RJ = MT-RJ		10M	
					*Any custom length available	

Example: S8FCXUPC-SC-3M = Simplex Extreme Polish, FC to SC, 3 Meters in length

#### Factory Polishes - Discretes

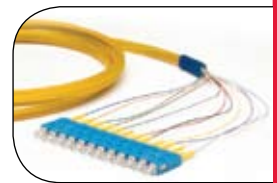
Polish	Return Loss	Insertion Loss
PC	-50 dB	.35 max
UPC	-55 dB	.30 max
XUPC	-55 dB	.20 max
APC	-65 dB	.30 max



## Fiber Optic Pigtails

Optical Cable Corporation's fiber optic pigtail assemblies are designed for reliability and performance. All Optical Cable Corporation pigtail assemblies may be ordered pre-terminated in any Optical Cable Corporation rack or wall mount cabinet or custom configured for field installations. Either way, Optical Cable Corporation's pigtail assemblies combine high-precision zirconia ferrules and rugged composite hardware to provide the optical performance, durability and repeatability necessary for today's network applications.

- Available in 6 or 12 bundle pigtails
- Color-coded 900 micron designed for splicing in enclosure environments
- Fiber sleeving color coded to differentiate Multi-mode, Single-mode, and 50 Micron
- Ribbon and jacketed cable pigtails also available
- Any specified length available



#### Pigtail Assemblies

Fiber Optic Cable Selection Chart						
P			Optional		-	
	Fiber Type	Connector Type	Polish Type	Fiber Count		Length in Meters
	5 = 50 μm	ST	UPC = Ultra Polish	06		1M
	5G = 50 Gig	SC	APC = Angled Polish	12		2M
	6 = 62.5 μm	RJ = MT-RJ				3M
	8 = Single-mode	LC				5M
		FC				10M

Example: P8SCUPC12-3M = Pigtail Assembly, Single-mode, SC, Ultra Polish, 12 fiber, 3 Meters in length

Optical Cable Corporation reserves the right to change this specification without prior notification.

## Fibreguard™ Closure

Ideal for Campus LANs, Data Centers and Entrance Facilities, Optical Cable Corporation offers the Fibreguard™ Enclosure, a complete and fully accessible fiber closure solution. The Fibreguard™ enclosure was engineered with the contractor in mind by providing an express cable port design and an innovative end plate design with segmented sections that allow for individual access to each cable without disruption to surrounding cables. Additionally, a full line of multi-hole grommets ensure the ultimate level of flexibility. Re-entry is quick and requires no special tools or kits. Moreover, the Fibreguard™ enclosure provides a connectivity solution that was specifically designed for an ever-evolving telecommunications network.

- No special tools required
- Easy future drop cable installation
- No gas equipment cost
- Mechanical Cable and Closure Sealing System
- Expandable Split Grommets
- Multi-drop Ability from one port
- Wide opening express cable ports
- Extensive size of cable ranges accepted
- Proven "O" ring sealing system from dome to end plate
- Flash testing to prove closure integrity
- Minimal cable preparation required
- Cost effective



**Fibreguard™ Enclosures**

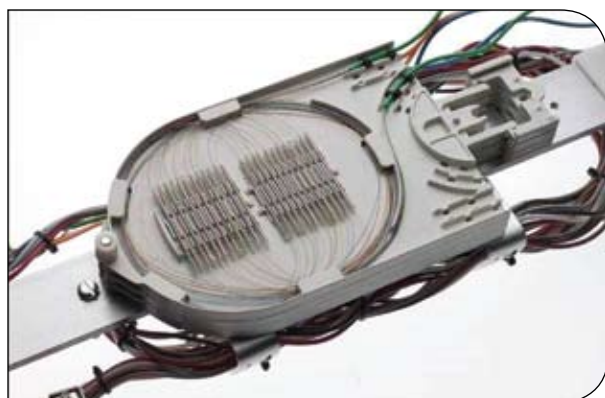
Catalog Numer	Description	Express Ports	Drop Ports	Fiber Trays Included	Grommets Included
FG5-1S	Fibreguard™ 500 Series	2	2	(1) 12 fiber	A (2 pcs.)
FG5-2S	Fibreguard™ 500 Series	2	2	(2) 12 fiber	A (2 pcs.)
FG5-3S	Fibreguard™ 500 Series	2	2	(3) 12 fiber	A (2 pcs.)
FG5-4S	Fibreguard™ 500 Series	2	2	(4) 12 fiber	A (2 pcs.)
FG6-1S	Fibreguard™ 650 Series	2	3	(1) 24 fiber	A, B, & C (2 each)
FG6-2S	Fibreguard™ 650 Series	2	3	(2) 24 fiber	A, B, & C (2 each)
FG6-3S	Fibreguard™ 650 Series	2	3	(3) 24 fiber	A, B, & C (2 each)
FG6-4S	Fibreguard™ 650 Series	2	3	(4) 24 fiber	A, B, & C (2 each)
FG8-1S	Fibreguard™ 800 Series	2	5	(1) 24 fiber	A, B, & C (2 each)
FG8-1S48	Fibreguard™ 800 Series	2	5	(1) 48 fiber	A, B, & C (2 each)
FG8-1S72	Fibreguard™ 800 Series	2	5	(1) 72 fiber	A, B, & C (2 each)



## FIBREGUARD™ CLOSURE



### FC 24 | FIBER OPTIC CONNECTIVITY



#### Fibreguard™ Enclosure Information

Closure Designation	Express Port Sizes mm (inches)	Drop Port Sizes mm (inches)	No. of Drop Ports	Closure Length mm (inches)	Closure Diameter mm (inches)	Max. No. of Splice Trays	Splice Capacity	
							24 per tray	36 per tray
500 Series	2 x 10 -25 (.39 -1.00)	2 x 3 -25 (.11 -1.00)	2	515 (20-25)	130 (5)	4	48	N/A
650 Series	2 x 10 -25 (.39 -1.00)	3 x 3 -25 (.11 -1.00)	3	600 (24.5)	165 (6.5)	4	96	144
800 Series	2 x 10 -25 (.39 -1.00)	2 x 3 -25 (.11 -1.00)	5	700 (28.5)	203 (8.0)	8	192	288

#### FibreGuard™ Grommets

Catalog Number	Description
FGD-1H	Includes A, B, and C grommets
FGD-2H	(1) 2-hole grommet
FGD-4H	(1) 4-hole grommet

#### FibreGuard™ Splice Trays

Catalog Number	Description
FG5003	12 fiber slide-n-lock tray, fusion splice
FGT-24S	24 fiber slide-n-lock tray, fusion splice
FGT-48S	48 fiber slide-n-lock tray, fusion splice
FGT-72S	72 fiber slide-n-lock tray, fusion splice

#### FibreGuard™ Grommet Drop Port Combinations

Closure Designation	Cable Range mm (inches)	Number of Entries
A	10-15 (0.39-0.59)	1
B	15-21 (0.59-0.82)	1
C	21-25 (0.82-1.00)	1
2H	7-12 (0.27-0.47)	2
4H	3-7 (0.11-0.27)	4